

# SHIP'S PARTICULARS

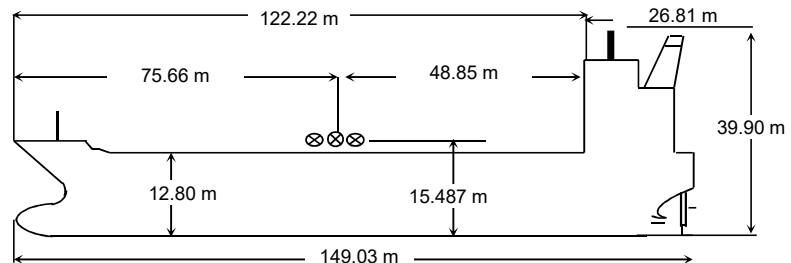
NAME	FPMC S SAPPHIRE
CALL SIGN	BHJI
FLAG	TAIWAN
PORT OF REGISTRY	KEELUNG
OFFICIAL NUMBER	016581
IMO/LLOYDS NUMBER	9913779
CLASS SOCIETY	CR&ABS
CLASS NOTATION	+A1, Chemical Carrier, Oil Carrier, ESP, (E) , +AMS, +ACCU, CPS, BWT, CRC (SC-PL , SP) , IHM, RW, TCM, UWILD, VEC, RRDA
P & I CLUB	The Britannia Steam Ship Insurance Association Limited

KEEL LAID	25th February, 2021
LAUNCHED	18th October, 2021
DELIVERED	3rd February, 2022
SHIPYARD	ASAKAWA SHIPBUILDING CO.,LTD.

SATELLITE COMMUNICATION	
V SAT	INM-FBB, INM-C
E-MAIL	fpmcssapphire@gmail.com
FBB-PHONE	+870 773 071 111
FX-PHONE	+870 771 341 101
INM SAT-C	441607210 441607211
MMSI	416072000
EX. NAMES	N/A
CS / FLAG	N/A

OWNERS	FORMOSA PLASTICS MARINE CORP.
OPERATORS	FORMOSA PLASTICS MARINE CORP.

PRINCIPAL DIMENSIONS	
LOA	149.03
LBP	140.00
BREADTH (Extreme)	24.029
DEPTH (moulded)	12.80
HEIGHT (maximum)	39.90
BRIDGE FRONT - BOW	122.22
BRIDGE FRONT - STERN	26.81
BRIDGE FRONT - M'FOLD	48.85



TONNAGE	REGD	SUEZ	Panama
NET	6245		
GROSS	12471		
GROSS Reduced (R'n:13495)			

TANK CAPACITIES ( cbm )					
CARGO TANKS (98 %)		F.W Tanks (100%)		BLST TKS (100 %)	
1Ws	1426.970	Drink W.T. (P)	116.59	FPT-C	593.84
2Ws	1416.071	Fresh W.T. (C)	106.6	WBT 1Ws	931.80
3Ws	2962.583	Distilled W.T. (S)	46.71	WBT 2Ws	533.17
4Ws	5121.748	C.W.T. (P)	462.59	WBT 3Ws	951.06
5Ws	2954.501	C.W.T. (S)	462.59	WBT 4C	478.04
6Ws	3739.964			WBT 5Ws	1445.74
7Ws	3555.068			HeelT 2Ws	403.62
Slops-P	477.512			HeelT 3Ws	687.14
Slops-S	478.817			HeelT 4Ws	733.42
<b>TOTAL</b>	<b>22133.234</b>	<b>TOTAL</b>	<b>1195.08</b>	<b>TOTAL</b>	<b>6757.83</b>

LOAD LINE INFORMATION	FREEBOARD	DRAFT	DWT
TROPICAL	3.217	9.610	20,609
SUMMER	3.413	9.414	19,999
WINTER	3.609	9.218	19,392
SEG. BALLAST CONDND	7.237	5.59	8,636
DWT WITH SBT ONLY		6,927	
FWA @ Summer draft		209 mm	
TPC @ Summer draft		31.06	

OTHER DETAILS			
H. Level Alarm	95%	Independent	MUSASINO
Overfill Alarm	98%		

MACHINERY / PROPELLER / RUDDER	
MAIN ENGINE	MAN B&W 6S40ME-B9.5
M.C.R.	4,620kW @124min <sup>-1</sup>
N.C.R. (85%)	3,927kW @117min <sup>-1</sup>
MAX CRITICAL RANGE	61~71 min <sup>-1</sup>
AUX. BOILER	Miura, 1 x HB-15T, 15,000kg/h
GENERATOR (3 sets)	YANMAR 6EY18ALW, 745kW x 900min <sup>-1</sup>
EMER D.G.	mitsui, F6L912, 60kW x 1,800min <sup>-1</sup>
PROPELLER	4 Blade FPP, Dia 5350mm
RUDDER	Balanced hanging, 35°
STEERING GEAR	Rapson-Slide, RV-21-045-NR-T100
FW GENERATOR CAP	Miura, WM-15SK, 15t/day
BOW THRUSTER	N/A

BUNKER TANKS	
1 FOT (P)	346.81 m3
1 FOT (S)	346.81 m3
2 FOT (S)	253.39 m3
FO Sett	8.96 m3
FO Srv	8.97 m3
FO OFLOW	19.90 m3
<b>TOTAL</b>	<b>984.84 m3</b>
1 MGO (P)	29.90 m3
1 MGO (S)	29.20 m3
2 MGO (P)	150.47 m3
3 MGO (P)	102.92 m3
MGO Srv	8.89 m3
MGO Sett	8.89 m3
<b>TOTAL</b>	<b>330.27 m3</b>

WINCHES / WINDLASS / ROPES / EMERGENCY TOWING			
	FWD	AFT	PARTICULARS
WINCHES	3 (d.drm)	3 (d.drm)	
ROPE	6	6	φ 53 x 220m, MBL=43.1 ton
Winch BHC	3	3	34.6 ton
WINDLASS	2	-	
FIRE WIRE	1	1	φ 28 x 45m
ANCHOR	2	-	Stbd 10.5 shackles / Port 10.5 shackles
EMG. TOWING	No	No	

CARGO AND BALLAST PUMPING SYSTEM				
MAIN PUMPS	NO.	CAPACITY	HEAD	RPM
CARGO Framo	10	300m <sup>3</sup> /hr	115mlc	2660
CARGO Framo	6	200m <sup>3</sup> /hr	115mlc	2990
BALLAST Heishin	2	300m <sup>3</sup> /hr	0.34MPa	1800
TANK CLNG Framo	2	128m <sup>3</sup> /hr	100 mlc	2712

MANIFOLD ARRANGEMENT	
Distance of cargo manifold to cargo manifold	700 mm
Distance of cargo manifold to vpr. return manifold	1500 mm
Distance of top of rail to centre of manifold	906 mm
Distance of manifold to ship side	5520 mm
Distance of manifold from keel	15.487 m

CARGO HOSE CRANES	
1 Set x 10 ton x 18 m	

LIFE BOATS	
2x 30 Persons	
Type: FRP	
TOTALLY ENCLOSED TYPE	

FIRE FIGHTING SYSTEM	
E/RM	CO <sub>2</sub> , SEA WATER, HYPER MIST
PUMP ROOM	CO <sub>2</sub> , SEA WATER
CARGO/DK AREA	LOW EXPANSION FOAM, SEA WATER

IG / VAPOR EMISSION / VENTING	
IG BLOWER CAPACITY	2000 m <sup>3</sup> /Hr.
P/V VALVE PR./ VAC. SETTING	20kPa / -3.5 kPa

Min Bow Drft: 3.90 m
Bist Drft: F 4.46 m, A 6.80 m
MARPOL Trim: m
Propeller Immer.: 5.575 m