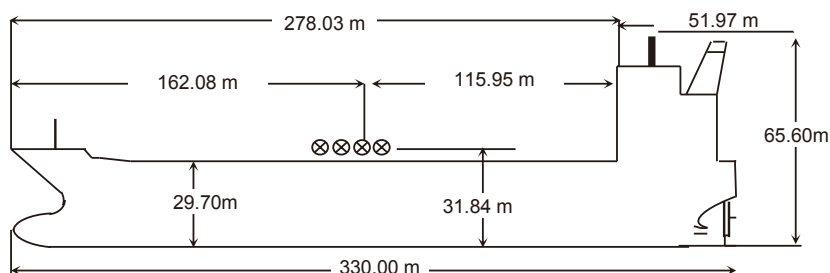


NAME	FPMC C ORIENT	KEEL LAID	15-Dec-10	SATELLITE COMMUNICATION	
CALL SIGN	D5AY9	LAUNCHED	21-Apr-12	V SAT	IINM-FBB, INM-C
FLAG	LIBERIA	DELIVERED	28-Jun-12	E-MAIL	corientfpmc@gmail.com
PORT OF REGISTRY	MONROVIA	SHIPYARD	Universal Shipbuilding Corp. (Ariake Shipyard, Japan), Hull No.131	FBB-PHONE	+870-773910344
OFFICIAL NUMBER	15472			FX-PHONE	+870-771301134
IMO/LLOYDS NUMBER	9457531			INM SAT-C	463712441
CLASS SOCIETY	BV			MMSI	636015472
CLASS NOTATION	BV I *Hull, Oil tanker ESP, Unrestricted navigation, *VeriSTAR-HULL, *AUT-UMS, MON-SHAFT, SPM, V, *MACH			EX. NAMES	NA
P & I CLUB	Gard P&I (Bermuda) Ltd.			CS / FLAG	NA

OWNERS	FPMC Orient Marine Corp.
OPERATORS	Formosa Plastics Marine Corp.

PRINCIPAL DIMENSIONS	
LOA	330 m
LBP	316 m
BREADTH (Extreme)	60 m
DEPTH (moulded)	29.7 m
HEIGHT (maximum)	65.6 m
BRIDGE FRONT - BOW	278.03 m
BRIDGE FRONT - STERN	51.97 m
BRIDGE FRONT - M'FOLD	115.95 m



TONNAGE	REGD	SUEZ	Panama
NET	98429	153819.42	NA
GROSS	156975	159737.82	NA
GROSS Reduced (R'n:13495)	NA	NA	NA

LOAD LINE INFORMATION	FREEBOARD	DRAFT	DWT
TROPICAL	7.773 M	21.971	305,409
SUMMER	8.221	21.523	297,412
WINTER	8.669	21.075	289,439
TROPICAL FRESH	7.298	22.4	305,247
FRESH	7.746	22.0	297,418
SEG. BALLAST CONDN	18.70	11.00	88,372
light ship		41552 MT	
DWT WITH SBT ONLY		101259 MT	
FWA @ Summer draft		475 mm	
TPC @ Summer draft		178.36 mt	

TANK CAPACITIES ( cbm )					
CARGO TANKS ( 98 % )			BLST TKS ( 100 % )		
1C	26939	F.W Tanks 100%	WBT 1P	9020	
2C	33178	F.W.T. (S)	139	WBT 1S	9032
3C	33178	D.W.P (P)	181	WBT 2P	8585
4C	33178	DIST.W.T. (P)	138	WBT 2S	8585
5C	32357			WBT 3P	13168
1Ws	30180			WBT 3S	13168
2Ws	40018			WBT 4P	8505
3Ws	31124			WBT 4S	8505
4Ws	40018			WBT 5P	8756
5Ws	24490			WBT 5S	8589
Slops-P/S	8704			APT	2876
<b>TOTAL</b>	<b>333364</b>	<b>TOTAL</b>	<b>638</b>	<b>TOTAL</b>	<b>98789</b>

OTHER DETAILS			
H. Level Alarm	95%	Independent	MOSASINO
Overfill Alarm	98%		

MACHINERY / PROPELLER / RUDDER	
MAIN ENGINE	Hitach Zosen-Man B & W 7S80MC MK
M.C.R	25090 Kw/ 34110 BHP x 78.6 RPM
N.C.R. (75%)	22580 kw / 30700 BHP x 75.9 RPM
MAX CRITICAL RANGE	33-41 RPM
BOILER	Mitsubishi, Type:MAC-40B
GENERATOR (3 sets)	Diesel (820kw x AC450V x 60Hz x 900RPM)
EMER D.G. (1 sets)	290kw x AC450V x 60Hz x 1800RPM
PROPELLER	4 Blades Solid Type. DIA.9600mm
RUDDER	Semi-balanced type, 35°
STEERING GEAR	Kawasaki, Type:FE22-485-T050
FW GENERATOR CAP	30MT/Day
BOW THRUSTER	NA

BUNKER TANKS	
NO.1 FOT (P)	1824 m <sup>3</sup>
NO.2 FOT (P)	1971 m <sup>3</sup>
NO.3 FOT (S)	1824 m <sup>3</sup>
FO SER	118 m <sup>3</sup>
FO SETT	118 m <sup>3</sup>
OVERFLOW	62.20 m <sup>3</sup>
<b>TOTAL</b>	<b>5917.2 m<sup>3</sup></b>

WINCHES / WINDLASS / ROPES / EMERGENCY TOWING			
	FWD	AFT	PARTICULARS
WINCHES	5	5	Electro-Hydraulic Driven, Double Drums
ROPE	2	2	42mm x 275M. (6 x 36WS + IWRC)
Winch BHC	5	5	91.4MT
WINDLASS	2	0	Electro-Hydraulic Driven
FIRE WIRE	1	1	42mm x 120M (6 x 36WS + IWRC)
ANCHOR	2	0	111mm x 385M x 2/U3 Anchor Chain, 14S
EMG. TOWING	1	1	Fwd: SWL 2000Kn, Pawl Type:TK40F-35P
			Towing Chafing Chain Dia.76mm x 8M
			Aft: SWL 2000Kn, Type: TK-40A
			Towing Line Dia 80mm x 90M



CARGO AND BALLAST PUMPING SYSTEM				
MAIN PUMPS	NO.	CAPACITY	HEAD	RPM
CARGO PUMP	3	5500 M <sup>3</sup> /Hr	145 M	1080
Stripping Pump	1	200 M <sup>3</sup> /Hr	145 M	30
Cargo Eductor	2	630 M <sup>3</sup> /Hr	35 M	
BALLAST PUMP	2	3000 M <sup>3</sup> /Hr	35 M	1180
Ballast Eductor	2	400 M <sup>3</sup> /Hr	35 M	

CARGO HOSE CRANES	
20MT X 2, Max Outreach 7.0M	

IG / VAPOR EMISSION / VENTING	
IG BLOWER CAPACITY	10315 M <sup>3</sup> /Hr x 2 Sets
P/V VALVE PR./ VAC. SETTING	1770/ -686mmwg

BUNKER TANKS	
NO.4 FOT (S)	1770 m <sup>3</sup>
DOT (S)	415 m <sup>3</sup>
DO SER	79 m <sup>3</sup>
TOTAL	2264 m <sup>3</sup>

BUNKER TANKS	
Persons 32 X 2	
Type: JY-QFN-6.50	
TOTALLY ENCLOSED TYPE	

Min Bow Drft: 7.28 m
Blst Drft: F 7.50m, A 11.00 m
MARPOL Trim: 4.95 m
Propeller Immer.: 10.473 m

MANIFOLD ARRANGEMENT	
Distance of cargo manifold to cargo manifold	3000 mm
Distance of cargo manifold to vpr. return manifold	4000 mm
Distance of top of rail to centre of manifold	700 mm
Distance of manifold to ship side	4600 mm
Distance of manifold from keel	3184 mm

IG / VAPOR EMISSION / VENTING	
E/RM	FIXED FOAM SYSTEM AND LOCAL HYPERMIST
PUMP ROOM	SEA WATER+FIXED FOAM
CARGO/DK AREA	SEA WATER+FIXED FOAM