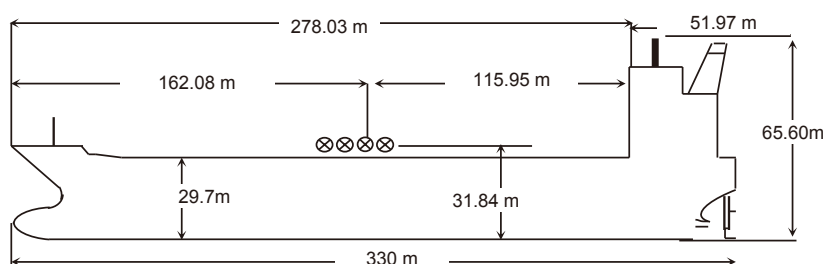


NAME	FPMC C NOBLE	KEEL LAID	15-Dec-10	SATELLITE COMMUNICATION	
CALL SIGN	D5AY8	LAUNCHED	02-Mar-12	V SAT	IINM-FBB, INM-C
FLAG	LIBERIA	DELIVERED	30-May-12	E-MAIL	fpmccnoble2@gmail.com
PORT OF REGISTRY	MONROVIA	SHIPYARD	Universal Shipbuilding Corp. Ariake Shipyard, Japan	FBB-PHONE	870-773910487
OFFICIAL NUMBER	15471			FX-PHONE	
IMO/LLOYDS NUMBER	9419955			INM SAT-C	463712143
CLASS SOCIETY	BV			MMSI	636015471
CLASS NOTATION	BVI, *HULL, Oil tankerESP, Unrestricted navigation, *VeriSTAR-HULL, AUT-UMS, MON-SHAFT, SPM, V, *MACH			EX. NAMES	
P & I CLUB	The Steamship Mutual Underwriting Association Limited			CS / FLAG	

OWNERS	FPMC NOBLE MARINE CORP.
OPERATORS	Formosa Plastics Marine Corp.

PRINCIPAL DIMENSIONS	
LOA	330 m
LBP	316 m
BREADTH (Extreme)	60 m
DEPTH (moulded)	29.70 m
HEIGHT (maximum)	65.60 m
BRIDGE FRONT - BOW	278.03 m
BRIDGE FRONT - STERN	51.97 m
BRIDGE FRONT - M'FOLD	115.95 m



TONNAGE	REGD	SUEZ	Panama
NET	98429	153819.42	NA
GROSS	156975	159737.82	NA
GROSS Reduced (R'n:13495)	NA	NA	NA

LOAD LINE INFORMATION	FREEBOARD	DRAFT	DWT
TROPICAL	7.773 M	21.971 M	305255
SUMMER	8.221 M	21.523 M	297258
WINTER	8.669 M	21.075 M	289285
SEG. BALLAST COND	20.59 M	9.11 M	86790
light ship			41706 MT
DWT WITH SBT ONLY			86790 MT
FWA @ Summer draft		475 mm	
TPC @ Summer draft			178.26 mt

TANK CAPACITIES (cbm)					
CARGO TANKS (98 %)			BLST TKS (100 %)		
1C	26939.00	F.W Tanks 100%	FPT(U) & (L)	Void Space	
2C	33178.00	BOILER W.T	138.11	WBT 1P	9020.00
3C	33178.00	DRINKING W.T.	180.66	WBT 1S	9032.00
4C	33178.00	TCFW TK (S)	318.77	WBT 2P	8585.00
5C	32357.00			WBT 2S	8585.00
1Ws	30180.00			WBT 3P	13168.00
2Ws	40018.00			WBT 3S	13168.00
3Ws	31124.00			WBT 4P	8505.00
4Ws	40018.00			WBT 4S	8505.00
5Ws	24490.00			WBT 5P	8756.00
Slops-P	4352.00			WBT 5S	8589.00
Slops-S	4352.00			APT	2876.00
TOTAL	333364.00	TOTAL	637.54	TOTAL	98789.00

OTHER DETAILS			
H. Level Alarm	95%	Independent	MOSASINO
Overfill Alarm	98%		

MACHINERY / PROPELLER / RUDDER	
MAIN ENGINE	Hitach Zosen-Man B & W 7S80MC
M.C.R	25090KW/34110BHP x 78.6RPM
N.C.R. (75%)	22580KW/30700BHP x 75.9RPM
MAX CRITICAL RANGE	33-41 RPM
AUX. BOILER	Mitsubishi MAC-40B
GENERATOR (3 sets)	820KW x 450V x 900RPM
EMER D.G.	260KW x 450V x 1800RPM
PROPELLER	4 Blades Solid type DIA.9600mm, Pitch:6379mm Ratio:0.7020
RUDDER	Semi-Spade, 35°
STEERING GEAR	FE22-485-T050, 4760KN-m
FW GENERATOR CAP	30 ton/day
BOW THRUSTER	NIL

BUNKER TANKS	
1 FOT (P)	1824.00 m³
2 FOT (P)	1971.00 m³
3 FOT (S)	1824.00 m³
FO SETT	118.00 m³
FO SER	118.00 m³
LSFO sett	
LSFO Serv	
FO OFLOW	62.20 m³
TOTAL	5917.20 m³

WINCHES / WINDLASS / ROPES / EMERGENCY TOWING			
	FWD	AFT	PARTICULARS
WINCHES	5	5	Electro Hydraulic Drive Double Drums/Warping Head
ROPE	2	2	Material: Nylon / Length: 220 m / MBL: 139.3MT
Winch BHC	5	5	Electro-hydraulic motor/BHC: 91.3MT/R.P.: 60.7MT
WINDLASS	2	0	Hauling Power : 60.1 Tons (590 kn)
FIRE WIRE	1	1	42mm x 120M MBL: 101Tons(990.8kn)
ANCHOR	2	0	Stbd 14 shackles / Port 14 shackles
EMG. TOWING	1	1	SWL:2000KN Towing line L:10M. Chain Did:76mm
			SWL:2000KN 80mm X 90 M, Galvanized Steel Rope

CARGO AND BALLAST PUMPING SYSTEM				
MAIN PUMPS	NO.	CAPACITY	HEAD	RPM
CARGO Framo	3	5500 M ³ /Hr	145 m	1080
CARGO Framo	1	200 M ³ /Hr	145 m	N/A
BALLAST Framo	2	650 M ³ /Hr	35 m	10KG
TANK CLNG Framo	2	3000 M ³ /Hr	35 m	1150

CARGO HOSE CRANES	
2 X 20 T (S.W.L)	

IG / VAPOR EMISSION / VENTING	
IG BLOWER CAPACITY	10315 M ³ /Hr x 2 Sets
P/V VALVE PR./ VAC. SETTING	1770/ -686mmwg

BUNKER TANKS	
MGO	415.00 m ³
4 FOT (S)	1770.00 m ³
MGO Srv	79.00 m ³
TOTAL	2264.00 m³

BUNKER TANKS	
2 X 32 Persons	

Type:FRP
TOTALLY ENCLOSED TYPE

Min Bow Drft: 5.73 m
Blst Drft: F5.73m, A 10.47 m
MARPOL Trim: 4.74 m
Propeller Immer.: 10.47 m

MANIFOLD ARRANGEMENT	
Distance of cargo manifold to cargo manifold	3000 mm
Distance of cargo manifold to vpr. return manifold	4000 mm
Distance of top of rail to centre of manifold	700 mm
Distance of manifold to ship side	4600 mm
Distance of manifold from keel	3184 mm

IG / VAPOR EMISSION / VENTING	
E/RM	HIGH EXPANSION FOAM&HYPER MIST
PUMP ROOM	HIGH EXPANSION FOAM
CARGO/DK AREA	LOW EXPANSION FOAM