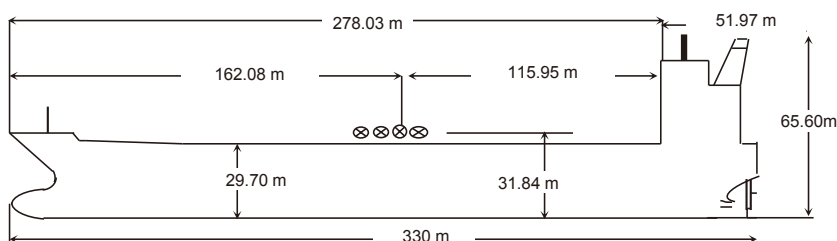


NAME	FPMC C MELODY	KEEL LAID	17-Sep-10	SATELLITE COMMUNICATION	
CALL SIGN	A8XJ6	LAUNCHED	14-Oct-11	V SAT	IINM-FBB, INM-C
FLAG	LIBERIA	DELIVERED	22-Dec-11	E-MAIL	fpmccmelody@singtelmailbiz.com
PORT OF REGISTRY	MONROVIA	SHIPYARD	UNIVERSAL SHIP BUILDING CORPORATION , ARIAKE SHIPYARD	FBB-PHONE	870-773178170
OFFICIAL NUMBER	14910			FX-PHONE	870-783179494
IMO/LLOYDS NUMBER	9406178			INM SAT-C	463711480
CLASS SOCIETY	BUREAU VERITAS			MMSI	636014910
CLASS NOTATION	BV I, *HULL, *MACH, Oil tanker ESP, Unrestricted navigation, *VeriSTAR-HULL, *AUT-UMS, MON-SHAFT, SPM, V, *MACH			EX. NAMES	NA
P & I CLUB	THE BRITANNIA STEAM SHIP INSURANCE ASSOCIATION LIMITED			CS / FLAG	NA

OWNERS	FPMC MELODY MARINE CORP.
OPERATORS	FLEET MANAGEMENT LIMITED

PRINCIPAL DIMENSIONS	
LOA	330 m
LBP	316 m
BREADTH (Extreme)	60 m
DEPTH (moulded)	29.7 m
HEIGHT (maximum)	65.6 m
BRIDGE FRONT - BOW	278.03 m
BRIDGE FRONT - STERN	51.97 m
BRIDGE FRONT - M'FOLD	115.95 m



TONNAGE	REGD	SUEZ	Panama
NET	98429	153819.42	NA
GROSS	156975	159737.82	NA
GROSS Reduced (R'n:13495)	NA	NA	NA

LOAD LINE INFORMATION	FREEBOARD	DRAFT	DWT
TROPICAL	7.770 m	21.97 m	302,226.00
SUMMER	8.22 m	21.52 m	297,229.00
WINTER	8.67 m	21.08 m	289,257.00
SEG. BALLAST COND	20.59 m	9.11 m	86,790.00

light ship	41,735 DISPLACEMENT	
DWT WITH SBT ONLY	86,790.00	
FWA @ Summer draft	475 mm	
TPC @ Summer draft	178.86 MT	

TANK CAPACITIES ( cbm )			
CARGO TANKS ( 98 % )		BLST TKS ( 100 % )	
1C	26939	F.W Tanks 100%	WBT 1P 9020.00
2C	33178	F.W.P (S) 319	WBT 1S 9032.00
3C	33178	D.W.T (P) 181.00	WBT 2P 8585.00
4C	33178	DIST.W.T (P) 138.00	WBT 2S 8585.00
5C	32357		WBT 3P 13168.00
1Ws	30180		WBT 3S 13168.00
2Ws	40018		WBT 4P 8565.00
3Ws	31124		WBT 4S 8565.00
4Ws	40018		WBT 5P 8756.00
5Ws	24490		WBT 5S 8589.00
SL Ws	8704		APT 2876.00
<b>TOTAL</b>	<b>333364.000</b>	<b>TOTAL</b>	<b>757.70</b>
		<b>TOTAL</b>	<b>98789.00</b>

OTHER DETAILS			
H. Level Alarm	95%	Independent	MOSASINO (OVERFILL)
Overfill Alarm	98%		

MACHINERY / PROPELLER / RUDDER	
MAIN ENGINE	HITACHI b&w 7s80mc Mk6
M.C.R	34110 KW @ 78.6
N.C.R. (75%)	30700 KW @ 75.9
MAX CRITICAL RANGE	33-41
AUX. BOILER	mitsubishi MAC 40B 39 T/HR @ 19.6 BAR
GENERATOR (3 sets)	YANMAR - 6N21AL-SV 820 KW X 3
EMER D.G.	MAN B & W D2866LE203 348 KW @ 1800
PROPELLER	4 BLADES SOLID TYPE AEROFOIL SECTION DIA - 9600 mm
RUDDER	SEMI BALANCED , STREAM - LINED HANGING TYPE
STEERING GEAR	ELECTRO-HYDRAULIC , 2 RAM , 4 CYCLINDER WITH 2 PUMP UNITS
FW GENERATOR CAP	SASAKURA FW GEN TUBULAR TYPE KE 30 & 30 T/DAY
BOW THRUSTER	NA

BUNKER TANKS	
NO.1 F.O.T (P)	1824.00 m³
NO.2 F.O.T (P)	1971.00 m³
NO.3 F.O.T (S)	1824.00 m³
SETT LSFO	118.00 m³
SERVICE LSFO	118.00 m³
OVERFLOW	62.20 m³
<b>TOTAL</b>	<b>5917.20 m³</b>

WINCHES / WINDLASS / ROPES / EMERGENCY TOWING			
	FWD	AFT	PARTICULARS
WINCHES	10	10	ELECTRO HYDRULIC MOTOR
WIRE	10	10	GSWR Dia-38 mm Length- 282 m
Winch BHC			91.40 MT
WINDLASS	2	NA	
FIRE WIRE	1	1	GALVANISED STEEL 60 m MBL -116.4 T
ANCHOR	2	NA	PORT/STBD 14 SHACKLES AC-14 STOCKLESS ANCHOR CHAIN DIA - 111mm
EMG. TOWING	YES	YES	
	1	1	FWD -SWL 200 T CHAIN - 76 mm , PAWL CHAIN STOPPER AFT - SWL 200 T FAIRLEADER

CARGO AND BALLAST PUMPING SYSTEM				
MAIN PUMPS	NO.	CAPACITY	HEAD	RPM
CARGO Framo	3	5500 M <sup>3</sup> /HR	145	1080
CARGO Framo	NA			
BALLAST Framo	2	3500 M <sup>3</sup> /HR	35	1180
TANK CLNG Framo	1	2500 M <sup>3</sup> /HR	145	1630

CARGO HOSE CRANES	
2 X 20 T P & S MIDSHIP, OUTREACH 7 m	

IG / VAPOR EMISSION / VENTING	
IG BLOWER CAPACITY	10315 M3/Hr x 2 Sets
P/V VALVE PR./ VAC. SETTING	1770/ -686mmwg

BUNKER TANKS	
NO. 4 STBD LSMGO	1770.00 m <sup>3</sup>
STORAGE	415.00 m <sup>3</sup>
SRVICE	97.00 m <sup>3</sup>
<b>TOTAL</b>	<b>7695.60 m<sup>3</sup></b>

LIFE BOATS	
NO.1 -32 PERSONS LIFE/ RESCUE BOAT STARBOARD SIDE	
NO.2 - 32 PERSONS LIFEBOAT PORT SIDE	
Type: GLASSFIBER REINFORCED POLYESTER	
TOTALLY ENCLOSED TYPE	

Min Bow Drft: 8.43 m
Blst Drft: F8.5m, A 11.3 m
MARPOL Trim: 4.95 m
Propeller Immer.: 10.473m

MANIFOLD ARRANGEMENT	
Distance of cargo manifold to cargo manifold	3000 mm
Distance of cargo manifold to vpr. return manifold	4000 mm
Distance of top of rail to centre of manifold	700 mm
Distance of manifold to ship side	4600 mm
Distance of manifold from keel	3184 mm

IG / VAPOR EMISSION / VENTING	
E/RM	FIXED FOAM SYSTEM AND LOCAL HYPERMIST
PUMP ROOM	FIXED FOAM SYSTEM
CARGO/DK AREA	FIXED FOAM SYSTEM