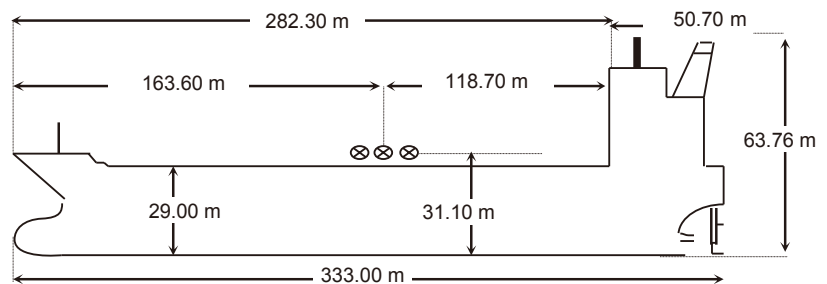




NAME	FPMC C KNIGHT	KEEL LAID	28-Dec-06	SATELLITE COMMUNICATION	
CALL SIGN	A8XJ3	LAUNCHED	05-Nov-10	V SAT	IINM-FBB, INM-C
FLAG	LIBERIA	DELIVERED	25-Feb-11	E-MAIL	fpmcknight1@gmail.com
PORT OF REGISTRY	MONROVIA	SHIPYARD	IHI Marine United INC, Japan (Kure, Hiroshima, Japan)	FBB-PHONE	+870-773912051
OFFICIAL NUMBER	14907			FX-PHONE	+870-771306191
IMO/LLOYDS NUMBER	9419967			INM SAT-C	463709485 FKNI X
CLASS SOCIETY	ABS			MMSI	636014907
CLASS NOTATION	ABS: +A1, Oil Carrier(E),+AMS,+ACCU,VEC,TCM,SHR,PMA,ESP,Uwild,CRC,RW			EX. NAMES	N/A
P & I CLUB	Steamship Mutual Underwriting Association LTD. (www.steamshipmutual.com) Aquatual House, 39 Bell Lane, London, E1, 7LU. TEL: +44-20-72475490, 78958490			CS / FLAG	N/A

OWNERS	FPMC KNIGHT MARINE CORP	80 Broad Street, Monrovia, Liberia
OPERATORS	Formosa Plastics Marine Corp.	7F, 201 Tung Hwa North Rd, Taipei, Taiwan, ROC

PRINCIPAL DIMENSIONS	
LOA	333.00 m
LBP	324.00 m
BREADTH (Extreme)	60.00 m
DEPTH (moulded)	29.00 m
HEIGHT (maximum)	63.76 m
BRIDGE FRONT - BOW	282.30 m
BRIDGE FRONT - STERN	50.70 m
BRIDGE FRONT - M'FOLD	163.60 m



TONNAGE	REGD	SUEZ	Panama
NET	98188 MT	160848.65 MT	N/A
GROSS	159869 MT	161480.61 MT	N/A
GROSS Reduced (R'n:13495)		N/A	

LOAD LINE INFORMATION	FREEBOARD	DRAFT	DWT
TROPICAL	7.990 m	21.06 m	309701 MT
SUMMER	8.419 m	20.635 m	301861 MT
WINTER	8.848 m	20.206 m	294040 MT
SEG. BALLAST CONDN			
light ship		72241 MT	
DWT WITH SBT ONLY		92600 MT	
FWA @ Summer draft		471 mm	
TPC @ Summer draft		182.60	

TANK CAPACITIES (cbm)					
CARGO TANKS (98 %)			BLST TKS (100 %)		
1Ws	61964.605	FW Tanks 100%	FPT(U)&(L)		
2Ws	67931.385	BOILER WT	WBT 1Ws	17539.48	
3Ws	74724.275	TCFW TK (P)	WBT 2Ws	18987.90	
4Ws	67931.395	TCFW TK (S)	WBT 3Ws	20894.72	
5Ws	57865.884	C.W.T.	WBT 4Ws	18481.33	
6Ws	N/A	FW General (P)	WBT 5Ws	14893.28	
7Ws	N/A	FW General (S)	WBT 6Ws	4802.04	
Slops-P	6295.863	DRINKING W.T.	FPT Ws	4447.13	
Slops-S	6295.863		APT Ws	2696.69	
TOTAL	343009.270		TOTAL	757.60	102742.57
OTHER DETAILS					
H. Level Alarm	95%	Independent			
Overfill Alarm	98%				

MACHINERY / PROPELLER / RUDDER	
MAIN ENGINE	Diesel United Wartsila, 7RTA84TB x 1Set
M.C.R	27160 kw @74.0 RPM
N.C.R. (75%)	23090 kw @70.1RPM
MAX CRITICAL RANGE	28-35 RPM
AUX. BOILER	MITSUBISHI MAC-80B X 1 set
GENERATOR (3 sets)	AC. 1100KW x 450V x 900RPM
EMER D.G.	AC 260KW x 450V x 1800 RPM
PROPELLER	5 Blades Solid, DIA.9700mm
RUDDER	Semi-Balanced Rudder.35°
STEERING GEAR	KAWASAKI FM-21-485-T050
FW GENERATOR CAP	35 t/d
BOW THRUSTER	N/A

BUNKER TANKS	
1 FOT (P/S)	2347.28 m³
1 FOT (P/S)	1531.19 m³
2 FOT	
2 FOT (P)	1933.41 m³
2FOT (S)	1715.78 m³
FO SETT	73.16 m³
FO SER	56.89 m³
LSFO sett	
LSFO Serv	
FO OFLOW	47.40 m³
TOTAL	7705.11 m³
MGO	659.39 m³
MOG Srv 1	13.79 m³
MOG Srv 2	54.89 m³
TOTAL	728.07 m³

WINCHES / WINDLASS / ROPES / EMERGENCY TOWING			
	FWD	AFT	PARTICULARS
WINCHES	5	5	20Tons(196kn) x 15M./Min.
ROPES	10	10	75/80MMx200M, MBL 94.2MT/141.2MT
Winch BHC	902KN	902KN	Brake Force at 1st Layer 69T
WINDLASS	2	NIL	63.0 Tons (617 kn)
FIRE WIRE	1	1	42MM x 120M MBL: 124.0MT
ANCHOR	2		Stbd 14 shackles / Port 14 shackles
EMG. TOWING	KETA-45F	204 Tons	Chafing Chain L: 8 M./ Chain Dia.76mm Bow Chain Stopper : 2 Sets x 350Tons
	KETA-40A	204 Tons	Towing Pennant L: 90 M./ Wire Dia.80mm



CARGO AND BALLAST PUMPING SYSTEM				
MAIN PUMPS	NO.	CAPACITY	HEAD	RPM
CARGO Framo	3	5500 M	145 M	1080
CARGO Framo	1	300 M ³	145 M	145 M
BALLAST Framo	2	3500 M ³	35M	35M
TANK CLNG Framo	1	2500 M ³	145 M	145 M

CARGO HOSE CRANES	
NA	

IG / VAPOR EMISSION / VENTING	
IG BLOWER CAPACITY (2 nos)	NA
P/V VALVE PR./ VAC. SETTING	NA

LIFE BOATS
Persons
2 X 34 Persons
Type: FRP
TOTALLY ENCLOSED TYPE

Min Bow Drft: 0.887 m
Blst Drft: F7.0m, A 10.5 m
MARPOL Trim: 4.86 m
Propeller Immer.: 10.2m

MANIFOLD ARRANGEMENT	
Distance of cargo manifold to cargo manifold	3.0 M
Distance of cargo manifold to vpr. return manifold	3.0 M
Distance of top of rail to centre of manifold	1.05 M
Distance of manifold to ship side	4.60 M
Distance of manifold from keel	22.35 M

IG / VAPOR EMISSION / VENTING	
E/RM	FOAM, HYPER MIST / 3900L X 1
PUMP ROOM	HIGH EXPANSION FOAM / 3900L X 1
CARGO/DK AREA	LOW EXPANSION FOAM / 6600L X 1