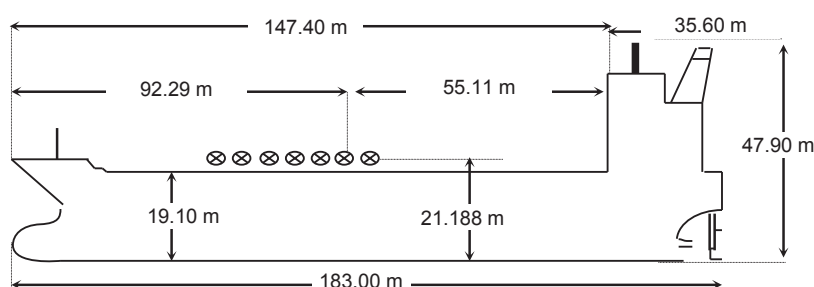


**PRINCIPAL PARTICULARS**

NAME	M.T. FPMC 29	KEEL LAID	25th July 2011	SATELLITE COMMUNICATION		
CALL SIGN	A8ZM8	LAUNCHED	26th Sep 2011	V SAT	INMARSAT-FBB, INMARSAT-C	
FLAG	LIBERIA	DELIVERED	15th Dec 2011	E-MAIL	fpmc29@gmail.com	
PORT OF REGISTRY	MONROVIA	SHIPYARD	STX Offshore & Shipbuilding Co. Ltd. Jinhae, S. Korea	PHONE	870 773 231 408	
OFFICIAL NUMBER	15250			FAX	870 783 204 979	
IMO/LLOYDS NUMBER	9581667	Hull no	S 1423	TELEX	463 711 471	
CLASS SOCIETY	ABS	LAST DRYDOCK :08/JUL -14/JUL/2014 AT ZHOUSHAN/CHINA				
CLASS NOTATION	+A1, CHEMICAL CARRIER, OIL CARRIER,(E), +AMS, + ACCU, VEC, TCM, AB-CM, BWE, CSR					
P & I CLUB	THE STEAMSHIP MUTUAL MANAGEMENT (BERMUDA) LTD.				MMSI	636 015 250
				MASTER	65 -32229000 ext 0-1046996	
				BRIDGE	65 -32229000 ext 0-1046995	

OWNERS	FPMC Formula Marine Corp, 7F, 201 TUNG HWA NORTH ROAD, TAIPEI, 10508, TAIWAN, R.O.C.
OPERATORS/ MANAGER	Formosa Plastics Marine Corporation., 7F, 201 TUNG HWA NORTH ROAD, TAIPEI, 10508, TAIWAN, R.O.C.

PRINCIPAL DIMENSIONS	
LOA	183.00 m
LBP	173.90 m
BREADTH (Extreme)	32.2 m
DEPTH (moulded)	19.10 m
HEIGHT (maximum)	47.90 m
BRIDGE FRONT - BOW	147.40 m
BRIDGE FRONT - STERN	35.60 m
BRIDGE FRONT - M'FOLD	55.11 m



TONNAGE	REGD	SUEZ	Panama	TANK CAPACITIES ( cbm )					
				CARGO TANKS (98 %)		BLST TKS (100 %)			
NET	13184	26256.45	24690	1Ws	6263.948	L.F.P.Tk.	592.30		
GROSS	29744	31046.98		2Ws	9277.016	F.W Tanks 100%	U.F.P.Tk.	1626.20	
GROSS Reduced (R'n:13495)		N/A		3Ws	4503.536	TCFWTK (P)	495.70	WBT 1Ws	3562.50
				4Ws	4708.131	TCFWTK (S)	583.80	WBT 2Ws	3351.60
				5Ws	9452.033			WBT 3Ws	2427.10
				6Ws	4500.487	FW General (P)	179.00	WBT4Ws	3312.30
				7Ws	4708.464	FW General (S)	179.00	WBT5Ws	3463.50
				8Ws	8327.522			WBT6Ws	4254.70
				Slops	1404.203			A.P.K. Tk	857.70
				<b>TOTAL</b>	<b>53145.340</b>	<b>TOTAL</b>	<b>1437.50</b>	<b>TOTAL</b>	<b>23447.90</b>

LOAD LINE INFORMATION	FREEBOARD	DRAFT	DWT
TROPICAL FRESH	6.511	12.616	
FRESH	6.763	12.364	
TROPICA	6.781	12.346	46,297.500
SUMMER	7.033	12.094	44,995.800
WINTER	7.285	11.842	43,696.400
BALLAST CONDND	11.659	7.453	21,583.300
DWT WITH SBT ONLY		20,774.10	
FWA @ Summer draft		271 mm	
TPC @ Summer draft		51.60	

OTHER DETAILS			
H. Level Alarm	95%	Independent	PANASIA
Overfill Alarm	98%		

MACHINERY / PROPELLER / RUDDER	
MAIN ENGINE	STX-MAN ENGINE 6S50MCC7
M.C.R	12703 HP/9480 KW @ 127 RPM
N.C.R. (85%)	8058 KW @ 120.3 RPM
MAX CRITICAL RANGE	50-62 RPM
AUX. BOILER	AALBORG, 1x MISSON OM 18000kg/h
GENERATOR (3 sets)	STX-MAN 5L-21/31, 1000KWx900rpm
EMER D.G.	Cummins, 6CT8.3-D(m), 140KW
PROPELLER	4 Blade FPP, Dia 6000mm
RUDDER	Semi-Spade, 35°
STEERING GEAR	Rotary Vane, RV 1350-3
FW GENERATOR CAP	SASAKURA, 20 Ts/Day
BOW THRUSTER	N.A

BUNKER TANKS	
1 FOT (P)	385.1 m <sup>3</sup>
1 FOT (S)	476.3 m <sup>3</sup>
2 FOT (P)	246.3 m <sup>3</sup>
FO SETT	43.3 m <sup>3</sup>
FO SER	43.3 m <sup>3</sup>
LSFO sett	42.57 m <sup>3</sup>
LSFOServ	42.57 m <sup>3</sup>
<b>TOTAL</b>	<b>1279.44 m<sup>3</sup></b>
2 FO (S)in	66.0 m <sup>3</sup>
2FO(S)out	192.6 m <sup>3</sup>
DOT (P)	51.0 m <sup>3</sup>
DOT (S)	86.3 m <sup>3</sup>
1 DO Set	21.4 m <sup>3</sup>
2 DO Srv	22.2 m <sup>3</sup>
<b>TOTAL</b>	<b>439.5 m<sup>3</sup></b>

WINCHES / WINDLASS / ROPES / EMERGENCY TOWING			
	FWD	AFT	PARTICULARS
WINCHES	6	6(d.drm)	POLYSTER/HYLON DOUBLE BRAIDED ROPE,B/S:63TON
MRG ROPES	6	6	
Winch BHC	53.6T	53.6T	BHC:37.5T
WINDLASS	2	NIL	
FIRE WIRE	1	1	
ANCHOR	2	0	Stbd 12 shackles / Port 11 shackles
EMG.TOWING	YES	YES	Anchor chain: 73 mm
	1	1	FWD CHAIN- ABS Grade or eq.,1180 Kg AFT- WIRE ROPE, SWRH 6XS2 IWRC,28.2Kg/m



CARGO AND BALLAST PUMPING SYSTEM

MAIN PUMPS	NO.	CAPACITY	HEAD	RPM
CARGO Framo	16	600 m <sup>3</sup> /hr	125mlc	
CARGO Framo	2	300 m <sup>3</sup> /h	125mlc	
CARGO Framo	1	150 m <sup>3</sup> /h	50mlc	
BALLAST Framo	2	750 m <sup>3</sup> /h	25mlc	
TANK CLNG Framo	2	200 m <sup>3</sup> /h	120mlc	

CARGO HOSE CRANES

1 Set x 10 T
--------------

IG / VAPOR EMISSION / VENTING

IG BLOWER CAPACITY	4500 cum/Hr.
P/V VALVE PR./VAC. SETTING	2000/ -350 mmwg

FIRE FIGHTING SYSTEM

E/RM	CO2, HYPER MIST
PUMP ROOM	NA
CARGO/DK AREA	LOW EXPANSION FOAM

LIFE BOATS

2 x 25 Persons
Type:DRAGON T-26
TOTALLY ENCLOSED TYPE
Life Rafts: 2 x 25 & 1x06

MANIFOLD ARRANGEMENT

Distance of cargo manifold to cargo manifold	2 M
Distance of cargo manifold to vpr. return manifold	4M/5M
Distance of top of rail to centre of manifold	4430 mm
Distance of manifold to ship side	4600 mm
Distance of manifold from keel	21.20 m

Min Bow Drft:6.465m

Propeller Immer.:6.40m

Blst Drft: F6.67m, A 8.28 m

MARPOL Trim: 1.53 m

Propeller Immer.:6.40m