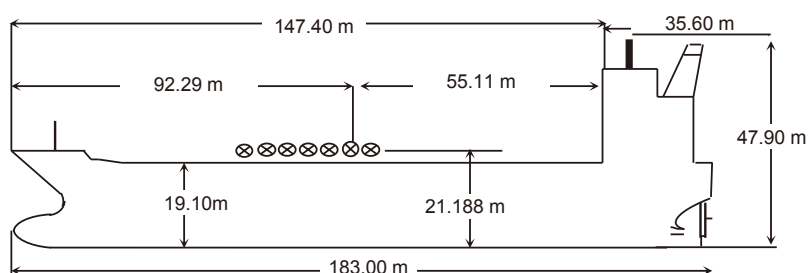




PRINCIPAL PARTICULARS

NAME	FPMC 27	KEEL LAID	17-May-11	SATELLITE COMMUNICATION	
CALL SIGN	A8ZM6	LAUNCHED	11-Jul-11	V SAT	TEL: +870-771305575(CAPT. CABIN)
FLAG	LIBERIA	DELIVERED	29-Sep-11	E-MAIL	fpmc27@gmail.com
PORT OF REGISTRY	MONROVIA	SHIPYARD	STX offshore & shipbuilding CO,LTD.JINHAE, South Korea(HULL NO.1418)	FBB-PHONE	TEL: 870 773 911 804(BRIDGE)
OFFICIAL NUMBER	15248			FX-PHONE	
IMO/LLOYDS NUMBR	9528366			INM SAT-C	463710883
CLASS SOCIETY	ABS			MMSI	636015248
CLASS NOTATION	A1,Chemical Carrier ,Oil Carrier ,ESP ,E,AMS, ACCU,CPS ,CSR, AB-CM,BWE, CRC, RRDA, RW, TCM, VEC			EX. NAMES	N/A
P & I CLUB	STEAMSHIP MUTUAL ASSOCIATION(BERMUDA).			CS / FLAG	N/A
OWNERS	FPMC CENTURY MARINE CORP.				
OPERATORS	Formosa Plastics Marine Corporation				

PRINCIPAL DIMENSIONS	
LOA	183.0m
LBP	175.37m
BREADTH (Extreme)	32.2m
DEPTH (moulded)	19.1m
HEIGHT (maximum)	47.9m
BRIDGE FRONT - BOW	147.4m
BRIDGE FRONT - STERN	35.6m
BRIDGE FRONT - M'FOLD	58.4m



TONNAGE	REGD	SUEZ	Panama
NET	13174	26256.45	24690
GROSS	29744	31046.98	24,687.00
GROSS Reduced (R'n:13495)		N/A	
LOAD LINE INFORMATION	FREEBOARD	DRAFT	DWT
TROPICAL	5.884	13.243	50,902.00
SUMMER	6.154	12.973	49,499.00
WINTER	6.424	12.703	47,805.00
SEG. BALLAST COND'N			
light ship	10911.025		
DWT WITH SBT ONLY	23343.4 cub.m / 23927 T(48.34% SDWT)		
FWA @ Summer draft	291mm		
TPC @ Summer draft	51.90		

TANK CAPACITIES ( cbm )			
CARGO TANKS (98 %)		BLST TKS (100 %)	
1Ws	6263.717	FW Tanks 100%	FPT(U)&(L). 2218.50
2Ws	9276.733	BOILER W.T	WBT 1Ws 3562.50
3Ws	4500.104	TCFW TK (P)	WBT 2Ws 3551.60
4Ws	4707.665	TCFW TK (S)	WBT 3Ws 2427.10
5Ws	9454.094	C.W.T.	WBT 4Ws 3312.30
6Ws	4503.109	FW General (P)	WBT 5Ws 3463.50
7Ws	4707.070	FW General (S)	WBT 6Ws 4150.20
8Ws	8329.960	DRINKING W.T.(S)	APT Ws 857.70
Slops-P	696.666		
Slops-S	706.874		
TOTAL	53145.992	TOTAL 0.00	TOTAL 23343.40
OTHER DETAILS			
H. Level Alarm	95%	Independent	MUSASINO
Overfill Alarm	98%		

MACHINERY / PROPELLER / RUDDER	
MAIN ENGINE	STX MAN B&W 6S50MC-C7
M.C.R	12900BHP×127RPM(9480KW)
N.C.R. (75%)	10960 BHP X 120.3 RPM
MAX CRITICAL RANGE	50-62RPM
AUX. BOILER	AALBORG 25METRIC TON/HOUR
GENERATOR (3 sets)	STX-engine 950×900RPM
EMER D. G.	CUMMINS, 6CT8.3-DMGE, 120KW
PROPELLER	4 BLADES FIXED PITCH SOLID KEYLESS RIGHT-HANDLE
RUDDER	Semi-Spade, 35°
STEERING GEAR	Rotary Vane, RV 11350-3
FW GENERATOR CAP	SASAKURA ,20Ts/Day
BOW THRUSTER	N/A

BUNKER TANKS	
1 FOT (P)	385.10 m³
1 FOT (S)	476.30 m³
2 FOT	246.30 m³
2 FO (S)in	66.00 m³
2FO(S)out	192.60 m³
FO SETT	43.30 m³
FO SER	43.30 m³
LSFO sett	42.60 m³
LSFO Serv	42.60 m³
FO OFLOW	17.40 m³
TOTAL	1555.50 m³
MGO	137.30 m³
MOG Srv 1	21.40 m³
MOG Srv 2	22.20 m³
TOTAL	180.90 m³

WINCHES / WINDLASS / ROPES / EMERGENCY TOWING			
	FWD	AFT	PARTICULARS
WINCHES	6 (d.drm)	6 (d.drm)	
ROPE	6	6	200m
Winch BHC	6	6	53.6mt
WINDLASS	2	NIL	
FIRE WIRE	1	1	Owner supply
ANCHOR	2	0	Stbd 12 shackles / Port 11 shackles
			Anchor chain: 73 mm
EMG.TOWING	YES	YES	
	1	1	

CARGO AND BALLAST PUMPING SYSTEM				
MAIN PUMPS	NO.	CAPACITY	HEAD	RPM
CARGO Framo	16	600m³	125mic	
CARGO Framo	2	300m³	125mic	
BALLAST Framo	2	750m³	25mic	
TANK CLNG Framo	2	200m³	120mic	

MANIFOLD ARRANGEMENT	
Distance of cargo manifold to cargo manifold	2m
Distance of cargo manifold to vpr. return manifold	4m
Distance of top of rail to centre of manifold	0.8m
Distance of manifold to ship side	4.6m
Distance of manifold from keel	21.2m



PRINCIPAL PARTICULARS

CARGO HOSE CRANES		LIFE BOATS	FIRE FIGHTING SYSTEM	
10t×10m/min×25m×1 Set		2x 25 Persons	E/RM	CO2,HYPER MIST
IG / VAPOR EMISSION / VENTING		Type: FRP	PUMP ROOM	N/A
IG BLOWER CAPACITY	4500m <sup>3</sup> /hr×2 Set(1 set at time)	TOTALLY ENCLOSED TYPE	CARGO/DK AREA	LOW EXPANSION FOAM
P/V VALVE PR./ VAC. SETTING	2000/-350mmwg	Min Bow Drft: 6.56m		
		Blst Drft: F 6.56m, A 8.01m		
		MARPOL Trim: 1.45m		
		Propeller Immer.: 6.37m		