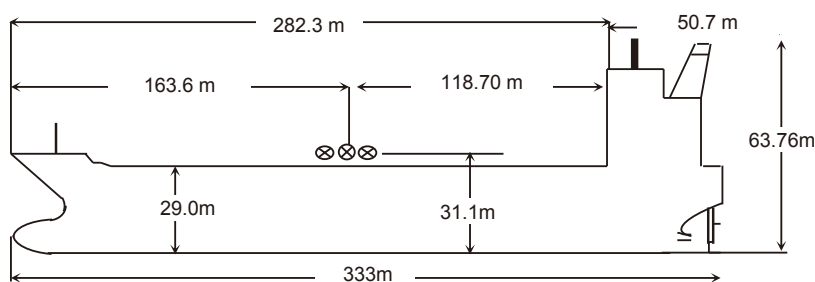


NAME	FPMC C LORD	KEEL LAID	28-Dec-06	SATELLITE COMMUNICATION	
CALL SIGN	A8XJ5	LAUNCHED	11-Jan-11	V SAT	IINM-FBB, INM-C
FLAG	LIBERIA	DELIVERED	09-May-11	E-MAIL	fpmcclord@gmail.com
PORT OF REGISTRY	MONROVIA	SHIPYARD	IHIMU JAPAN	FBB-PHONE	870 773912079
OFFICIAL NUMBER	14909			INM SAT-C	463709964
IMO/LLOYDS NUMBER	9447574			MMSI	636014909
CLASS SOCIETY	ABS			EX. NAMES	NA
CLASS NOTATION	+A1, (E), Oil Carrier, +AMS, +ACCU, VEC, TCM, SHR, PMA, ESP, UWILD, CRC, RW			CS / FLAG	NA
P & I CLUB	The Steamship Mutual Underwriting Association (Bermuda) Limited				

OWNERS	FPMC LORD MARINE CORP
OPERATORS	Formosa Plastics Marine Corp.

PRINCIPAL DIMENSIONS	
LOA	333.00
LBP	324.00
BREADTH (Extreme)	60.00
DEPTH (moulded)	29.00
HEIGHT (maximum)	63.76
BRIDGE FRONT - BOW	282.30
BRIDGE FRONT - STERN	50.70
BRIDGE FRONT - M'FOLD	118.70



TONNAGE	REGD	SUEZ	Panama
NET	98188	153137.45	
GROSS	156869	161480.61	
GROSS Reduced (R'n:13495)			

LOAD LINE INFORMATION	FREEBOARD	DRAFT	DWT
TROPICAL	7.99 m	21.064 m	309701 MT
SUMMER	8.419 m	20.206 m	301861 MT
WINTER	8.848 m		294040 MT
SEG. BALLAST COND			
light ship		42241	
DWT WITH SBT ONLY		88,405.00	
FWA @ Summer draft		471 mm	
TPC @ Summer draft		182.64	

TANK CAPACITIES (cbm)					
HOLD	CUB.M			BLST TKS (100 %)	
1Ws+1C	61964.587	FW Tanks 100%		FPT(U)&(L).	4447.13
2Ws+2C	67931.385	BOILER W.T	NA	WBT 1Ws	17539.48
3Ws+3C	74724.275	TCFW TK (P)	NA	WBT 2Ws	18987.90
4Ws+4C	67931.385	TCFW TK (S)	NA	WBT 3Ws	20894.72
5Ws+5C	57865.884	C.W.T.	NA	WBT 4Ws	18781.33
6Ws	N/A	FW General (P)	378.85	WBT 5Ws	14893.28
7Ws	N/A	FW General (S)	378.85	WBT 6Ws	4802.04
Slops-P	6295.863	DRINKING W.T.	NA	WBT 7Ws	N/A
Slops-S	6295.863			APT Ws	2696.69
TOTAL	343009.242	TOTAL	757.70	TOTAL	103042.57
OTHER DETAILS					
H. Level Alarm		Independent			
Overfill Alarm					

MACHINERY / PROPELLER / RUDDER	
MAIN ENGINE	DIESEL UNITED-WARTSILA7RTA84TB X 1SET
M.C.R	27,160KW / 74.0RPM (36422 HP)
N.C.R. (75%)	NA
MAX CRITICAL RANGE	28-35 RPM
AUX. BOILER	mitsubishi MAL-80B X1 SET
GENERATOR (3 sets)	AC 1100KW X 450V X 900 RPMX60HZ
EMER D.G.	AC 260KW X 450V X 1800 RPMX60HZ
PROPELLER	NAKASHIMA 5Blades Solid SP TYPE 20° SKEW
RUDDER	The streamline formed, semi-balanced,35°
STEERING GEAR	ELECTRO-HYDRAUL IC
FW GENERATOR CAP	35 m3/D
BOWTHRUSTER	N/A

BUNKER TANKS	
1 FOT (P)	2347.00 m ³
1 FOT (S)	1531.10 m ³
2 FOT (P)	1933.40 m ³
2 FOT (S)	1715.60 m ³
2FO(S)out	NA
FO SETT	70.50 m ³
FO SER	50.60 m ³
LSFO sett	NA
LSFO Serv	NA
FO OFLOW	47.40 m ³
TOTAL	7695.60 m³
MGO	659.39 m ³
MOG Srv 1	13.70 m ³
MOG Srv 2	55.00 m ³
TOTAL	728.09 m³

WINCHES / WINDLASS / ROPES / EMERGENCY TOWING				
	FWD	AFT	PARTICULARS	
WINCHES	8	10		
WIRE	10	10	42mm x 305m; SWL:119MT	
Winch BHC	92MT	92MT		
WINDLASS	2			
FIRE WIRE	1	1	42mm x 120m; SWL:125.5MT	
ANCHOR	2		14/14 SHACKLES	
EMG. TOWING	1	1	TONGUE TYPE , KETA-45F-35; 204 MT	
			FAIRLEAD & STRONG POINT, KETA-40A; 204MT	

CARGO AND BALLAST PUMPING SYSTEM				
MAIN PUMPS	NO.	CAPACITY	HEAD	RPM
CARGO Framo	3	5500 M ³ /HR	145	1080
CARGO Framo	NA			
BALLAST Framo	2	3500 M ³ /HR	35	1180
TANK CLNG Framo	1	2500 M ³ /HR	145	1630

CARGO HOSE CRANES
2 X 20MT

IG / VAPOR EMISSION / VENTING	
IG BLOWER CAPACITY (2 nos)	11900 x 2=23800 M3
P/V VALVE PR./ VAC. SETTING	17.2/-3.5 KPA

LIFE BOATS
Persons
34
Type: FRP
TOTALLY ENCLOSED TYPE

Min Bow Drft: 6.2 m
Blst Drft: F6.2m, A 10.9 m
MARPOL Trim: 4.86 m
Propeller Immer.: 10.19m

MANIFOLD ARRANGEMENT	
Distance of cargo manifold to cargo manifold	3.0 M
Distance of cargo manifold to vpr. return manifold	4.0 M
Distance of top of rail to centre of manifold	4.3 M
Distance of manifold to ship side	4.6 M
Distance of manifold from keel	

IG / VAPOR EMISSION / VENTING	
E/RM	HIGH EXPANSION FOAM/ HYPER MIST
PUMP ROOM	HIGH EXPANSION FOAM
CARGO/DK AREA	LOW EXPANSION FOAM