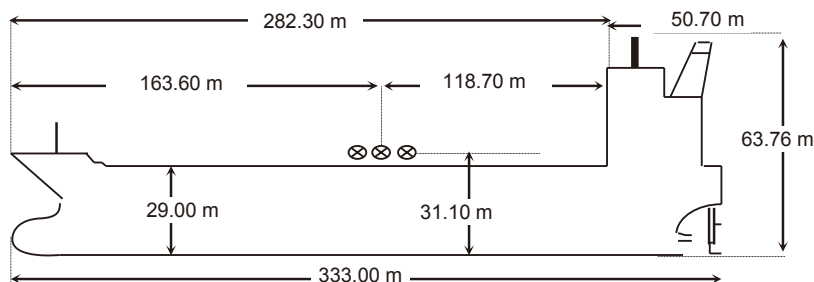


NAME	FPMC C JADE	KEEL LAID	15-DEC-2006	SATELLITE COMMUNICATION	
CALL SIGN	A8VE5	LAUNCHED	02-APR-2010	V SAT	IINM-FBB, INM-C
FLAG	LIBERIA	DELIVERED	15-JUL-2010	E-MAIL	fpmccjade1@gmail.com
PORT OF REGISTRY	MONROVIA	SHIPYARD	IHI Marine United INC, Japan (Kure, Hiroshima, Japan) (Hull No: 3250)	FBB-PHONE	+870-77391191
OFFICIAL NUMBER	14592			FX-PHONE	+870-765054551
IMO/LLOYDS NUMBER	9407316			INM SAT-C	463707848
CLASS SOCIETY	ABS			MMSI	636014592
CLASS NOTATION	ABS +A1, E, oil Carrier, +AMS,+ACCU,VEC, TCM,SHR,PMA,ESP,UMILD,CRC,RW			EX. NAMES	N/A
P & I CLUB	The Steamship Mutual Underwriting Association (Bermuda) Ltd.			CS / FLAG	LIBERIA

OWNERS	FPMC JADE MARINE Corp. (Owner No.5388755)	80 Broad St. Monrovia, Liberia
OPERATORS	Formosa Plastic Marine Corp.	7F. 201, Tung Hwa North Rd, Taipei, Taiwan
CHARTER	Formosa Petrochemical Corp.	8F. 201, Tung Hwa North Rd, Taipei, Taiwan

PRINCIPAL DIMENSIONS	
LOA	333.00 m
LBP	324.006 m
BREADTH (Extreme)	60.0 m
DEPTH (moulded)	29.0 m
HEIGHT (maximum)	63.76 m
BRIDGE FRONT - BOW	282.3 m
BRIDGE FRONT - STERN	50.70 m
BRIDGE FRONT - M'FOLD	163.60 m



TONNAGE	REGD	SUEZ	Panama
NET	98188	160848.65	N/A
GROSS	159869	161480.61	N/A
GROSS Reduced (R'n:)			

TANK CAPACITIES (cbm)					
CARGO TANKS (100 %) M ³			BLST TKS (100 %)		
1C	27321.81	FW Tanks 90% M ³	FPT(U)&(L)	4447.13	
2C	30566.68	BOILER W.T	WBT 1Ws	17539.48	
3C	33623.26	TCFWTK (P)	WBT 2Ws	18987.90	
4C	30566.69	TCFWTK (S)	WBT 3Ws	20894.72	
5C	32415.30	C.W.T.	WBT 4Ws	18781.33	
1Ws	35907.36	FW General (P)	WBT 5Ws	14893.28	
2Ws	38751.06	FW General (S)	378.85	WBT 6Ws	4802.04
3Ws	42626.00	DRINKING W.T.	378.85	WBT 7Ws	-
4Ws	38751.06			APT Ws	2696.69
5Ws	38751.06				
SLOPs	12848.70	TOTAL	757.70	TOTAL	103042.57
		OTHER DETAILS			
		H. Level Alarm	95%	Independent	MOSASINO
		Overfill Alarm	98%		
TOTAL	350009.44				

LOAD LINE INFORMATION	FREEBOARD	DRAFT	DWT
TROPICAL	7.990 m	21.064	309,625.00
SUMMER	8.418 m	20.635	301,785.00
WINTER	8.848 m	20.206	293,964.00
SEG. BALLAST COND			
light ship		42,317 MT	
DWT WITH SBT ONLY			
FWA @ Summer draft		471 mm	
TPC @ Summer draft		182.60	

MACHINERY / PROPELLER / RUDDER	
MAIN ENGINE	Diesel United Wartsila, 7RTA84TB
M.C.R	27160 kw @74.0 RPM
N.C.R. (75%)	23090 kw @70.1 RPM
MAX CRITICAL RANGE	28-35 RPM
AUX. BOILER	MHI 2 drum type MAC-80B
GENERATOR (3 sets)	YANMAR AC, 1100 KW x 450V x 900 rpm
EMER D.G.	AC, 260 KW x 450V x 1800 rpm
PROPELLER	5 Blade Solid type, Dia 9700mm
RUDDER	Semi-Balanced 35
STEERING GEAR	KAWASAKI FM-21-485-T050
FW GENERATOR CAP	30 t/d
BOW THRUSTER	N/A

BUNKER TANKS	
1 FOT (P/S)	2 x 1150.7
2 FOT (P/S)	2x 1012.3
3 FOT (P)	658.30 m ³
3 FOT (S)	463.00 m ³
2FO(S)out	
FO SETT	79.40 m ³
FO SER	79.40 m ³
LSFO sett	79.40 m ³
LSFO Serv	79.40 m ³
FO OFLOW	
TOTAL	5764.90 m ³
MGO	325.40 m ³
MOG Srv 1	75.30 m ³
MOG Srv 2	
TOTAL	400.70 m ³

WINCHES / WINDLASS / ROPES / EMERGENCY TOWING			
	FWD	AFT	PARTICULARS
WINCHES	8	8	
ROPES	8	8	16 x 80MM x 250M
Winch BHC	8	8	196KN x 15M/min,power 2 x 120KW
WINDLASS	2	0	44KN x 9m/min,power 2 x 120KW
FIRE WIRE	NA	NA	
ANCHOR	2	NA	Stbd 14 shackles / Port 13 shackles
EMG.TOWING	YES	YES	ANCHOR CHIAN 107mm
	1	1	



CARGO AND BALLAST PUMPING SYSTEM

MAIN PUMPS	NO.	CAPACITY	HEAD	RPM
CARGO Framo	3	5500 m ³ /hr	145 mlc	1080
Stripping Framo	1	300 m ³ /hr	145 mlc	33
BALLAST Framo	2	3500 m ³ /hr	35 mlc	1200
TANK CLNG Framo	1	2500 m ³ /hr	145 mlc	1630

CARGO HOSE CRANES

145 mlc

IG / VAPOR EMISSION / VENTING

IG BLOWER CAPACITY	11900 M ³ /Hrx 2 Sets
P/V VALVE PR./ VAC. SETTING	1720 / -350mmwg

FIRE FIGHTING SYSTEM

E/RM	High Foam / 3900L. X 1
PUMP ROOM	High Expansion Foam / 3900L. X 1
CARGO/DK AREA	Low Expansion Foam / 6600L. X 1

LIFE BOATS

2 x 34 Persons

Type: FRP

TOTALLY ENCLOSED TYPE

MANIFOLD ARRANGEMENT

Distance of cargo manifold to cargo manifold	3.00 m
Distance of cargo manifold to vpr. return manifold	3.00 m
Distance of top of rail to centre of manifold	4.30 m
Distance of manifold to ship side	4.60 m
Distance of manifold from keel	31.10 m

Min Bow Drft: 6.465 m

Blst Drft: F7.00 m, A 10.50 m

MARPOL Trim: 3.50 m

Propeller Immer.: 10.20m