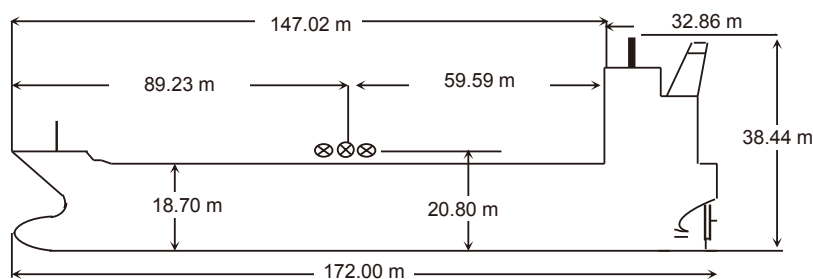




NAME	FORMOSA THIRTEEN	KEEL LAID	26-Aug-04	SATELLITE COMMUNICATION	
CALL SIGN	A8GJ7	LAUNCHED	23-Dec-04	V SAT	INM-FBB, INM-C
FLAG	LIBERIA	DELIVERED	30-Mar-05	E-MAIL	fpmc13@gmail.com
PORT OF REGISTRY	MONROVIA	SHIPYARD	SHIN KURUSHIMA DOCKYARD CO., Ltd	FBB-PHONE	870 773 910 417
OFFICIAL NUMBER	12589			FX-PHONE	870 783 177 767 / 769
IMO/LLOYDS NUMBR	9272503			INM SAT-C	463790191
CLASS SOCIETY	ABS			MMSI	636012589
CLASS NOTATION	A1,Chemical Carrier ,Oil Carrier ,ESP ,E,AMS,ACCU,CRC,RRDA, VEC			EX. NAMES	N/A
P & I CLUB	The Britannia Steam Ship Insurance Association Limited			CS / FLAG	N/A
OWNERS	FORMOSA PLASTICS MARINE CORPORATION				
OPERATORS	FORMOSA PLASTICS MARINE CORPORATION				

PRINCIPAL DIMENSIONS	
LOA	179.88 M
LBP	172.00 M
BREADTH (Extreme)	32.2 M
DEPTH (moulded)	18.7 M
HEIGHT (maximum)	38.44 M
BRIDGE FRONT - BOW	147.02 M
BRIDGE FRONT - STERN	32.86 M
BRIDGE FRONT - M'FOLD	56.59 M



TONNAGE	REGD	SUEZ	Panama
NET	11,696	26,411.99	23,502.90
GROSS	28,131	29,728.06	
GROSS Reduced (R'n:13495)			
LOAD LINE INFORMATION	FREEBOARD	DRAFT	DWT
TROPICAL	6.464	12.272	45,617.00
SUMMER	6.713	12.022	
WINTER	6.963	11.772	
SEG. BALLAST COND'N			
light ship		9163	
DWT WITH SBT ONLY			
FWA @ Summer draft		270mm	
TPC @ Summer draft		50.65	

TANK CAPACITIES (cbm)				
CARGO TANKS (98 %)			BLST TKS (100 %)	
1Ws	5695.165	F.W Tanks 100%	FPT(U)&(L).	1199.85
2Ws	9319.105	BOILER W.T	N/A	WBT 1Ws 2473.16
3Ws	5708.530	TCFW TK (P)	534.43	WBT 2Ws 3200.52
4Ws	9632.255	TCFW TK (S)	549.72	WBT 3Ws 1935.68
5Ws	5710.246	C.W.T.	N/A	WBT 4Ws 3122.12
6Ws	9222.578	FW General (P)	166.16	WBT 5Ws 1935.68
7Ws	5652.234	DRINKING W.T.(S)	92.01	WBT 6Ws 2978.20
Slops-P	999.486	DIST. W.T.(S)	74.15	WBT 7Ws 2153.32
Slops-S	995.148			APT Ws 667.65
TOTAL	52934.747	TOTAL	1416.47	TOTAL 19666.18
OTHER DETAILS				
H. Level Alarm	95%	Independent	MUSASINO	
Overfill Alarm	98%			

MACHINERY / PROPELLER / RUDDER	
MAIN ENGINE	KOBE DIESEL 6UEC60LA x 1 SET
M.C.R	9,267 kw (12600 PS) x 110 min-1
N.C.R. (75%)	6590kw (8964 PS) x 99.9 min-2
MAX CRITICAL RANGE	52-66RPM
AUX. BOILER	MVW-150 0.69MPA
GENERATOR(3 sets)	YANMAR 6N21L-EV 970KW/900RPM
EMER D.G.	BF6L913/UCM274C 82KW/1800RPM
PROPELLER	4BLADES SOLID
RUDDER	MONOVEC SPADE SCHILLING RUDDER 29.4m² 696KN.M
STEERING GEAR	ROLLS-ROYCE ROTARY VANE RV700-2
FW GENERATOR CAP	JWSP-26-C80B CAP25m³
BOW THRUSTER	N/A

BUNKER TANKS	
1 FOT (P)	1097.37 m³
1 FOT (S)	544.06 m³
2 FOT	N/A
2 FO (S)in	N/A
2FO(S)out	N/A
FO SETT	16.11 m³
FO SER	24.17 m³
LSFO sett	N/A
LSFO Serv	N/A
FO OFLOW	44.52 m³
TOTAL	1726.23 m³
D.O.T(P)	90.58 m³
D.O.T(S)	91.58 m³
M.G.O.T	378.04 m³
MOG Srv 1	27.97 m³
TOTAL	588.17 m³

WINCHES / WINDLASS / ROPES / EMERGENCY TOWING			
	FWD	AFT	PARTICULARS
WINCHES	8 (d.drm)	8 (d.drm)	
ROPE	8	8	200m
Winch BHC	8	8	44.6mt
WINDLASS	2	NIL	
FIRE WIRE	1	1	Owner supply
ANCHOR	2	0	Stbd 11 shackles / Port 11 shackles
EMG.TOWING	YES	YES	Anchor chain: 70 mm
	1	1	

CARGO AND BALLAST PUMPING SYSTEM				
MAIN PUMPS	NO.	CAPACITY	HEAD	RPM
CARGO Framo	14	600	125	
CARGO Framo	2	300	125	
BALLAST Framo	2	1000	25	
TANK CLNG Framo	2	120	120	

MANIFOLD ARRANGEMENT	
Distance of cargo manifold to cargo manifold	1000mm/2000mm
Distance of cargo manifold to vpr. return manifold	3000mm
Distance of top of rail to centre of manifold	900mm
Distance of manifold to ship side	4600mm
Distance of manifold from keel	20.8m



PRINCIPAL PARTICULARS

CARGO HOSE CRANES		LIFE BOATS	FIRE FIGHTING SYSTEM	
1 Set X 10 T		2x 25 Persons	E/RM	CO2,HYPER MIST
IG / VAPOR EMISSION / VENTING		Type: SZ-53TR	PUMP ROOM	N/A
IG BLOWER CAPACITY	2X2500 cum/Hr.	TOTALLY ENCLOSED TYPE	CARGO/DK AREA	LOW EXPANSION FOAM
P/V VALVE PR./ VAC. SETTING	2000/-350mmwg	Min Bow Drft: 4.916m		
		Blst Drft: F 6.0m, A 8.58m		
		MARPOL Trim: 1.2m		
		Propeller Immer.: 9.78m		