

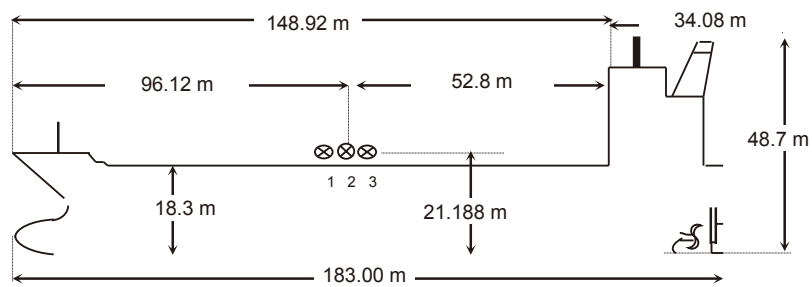


PRINCIPAL PARTICULARS

NAME	FPMC 36	KEEL LAID	16-Jul-19	SATELLITE COMMUNICATION	
CALL SIGN	D5RC9	LAUNCHED	15-Oct-19	V SAT	INM-FBB, INM-C
FLAG	LIBERIA	DELIVERED	24-Jun-20	E-MAIL	formosa.fpmc36@gmail.com
PORT OF REGISTRY	MONROVIA	SHIPYARD	Guangzhou Shipyard International Company Limited(GSI)	FBB-PHONE	870 773 913 299
OFFICIAL NUMBER	18728			FX-PHONE	870 771 309 832
IMO/LLOYDS NUMBR	9845180			INM SAT-C	463729271 463729272
CLASS SOCIETY	LR			MMSI	6360 18728
CLASS NOTATION	LR *100A1 Double Hull Oil and Chemical Tanker, ship type 2, ESP, CSR, LI *IWS SHIPRIGHT (ACS (B), CM) *LMC, UMS, IGS, ECO (BWT, VECS) Descriptive Notes: ShipRight(BWMP(T), SCM, SERS)			EX. NAMES	N/A
P & I CLUB	The Britannia Steam Ship Insurance Association Limited			CS / FLAG	N/A

OWNERS	FPMC 36 MARINE CORP. (OWNER NO. 6111292)
OPERATORS	Formosa Plastic Marine Corp.

PRINCIPAL DIMENSIONS	
LOA	183.00 m
LBP	179.56 m
BREADTH (Extreme)	32.0 m
DEPTH (moulded)	18.30 m
HEIGHT (maximum)	48.70 m
BRIDGE FRONT - BOW	148.92 m
BRIDGE FRONT - STERN	34.08 m
BRIDGE FRONT - M'FOLD	52.8 m



TONNAGE	REGD	SUEZ	Panama
NET	14961	30728.96	24257
GROSS	28891	26896.65	
GROSS Reduced (R'n:13495)		N/A	

TANK CAPACITIES (cbm)					
CARGO TANKS (98 %)			BLST TKS (100 %)		
1Ws	4741.926	FW Tanks 100%	FPT(U)&(L).	1580.60	
2Ws	5538.372	BOILER WT	62.7	WBT 1Ws	2247.50
3Ws	8491.896	TCFW TK (P)	435.50	WBT 2Ws	1975.30
4Ws	8644.776	TCFW TK (S)	386.30	WBT 3Ws	2792.30
5Ws	8640.758	C.W.T.	33.30	WBT 4Ws	2741.40
6Ws	5987.016	FW General (P)	124.60	WBT 5Ws	2734.70
7Ws	5577.964	FW General (S)	76.90	WBT 6Ws	2583.10
Slops-P	2286.928	DRINKING W.T.	51.10	WBT 7Ws	2631.30
Slops-S	2551.038			APT Ws	754.30
TOTAL	52460.674	TOTAL	1170.40	TOTAL	20040.50

LOAD LINE INFORMATION	FREEBOARD	DRAFT	DWT
TROPICAL			
SUMMER		13.300	49,721.30
WINTER			
SEG. BALLAST COND N			
light ship		11392.5	
DWT WITH SBT ONLY			
FWA @ Summer draft		284mm	
TPC @ Summer draft		53.80	

OTHER DETAILS			
H. Level Alarm	95%	Independent	MUSASINO
Overfill Alarm	98%		

MACHINERY / PROPELLER / RUDDER	
MAIN ENGINE	MAN B&W ENGINE 6G50MEC9.5 HP CSR
M.C.R	7585kW @86.1 RPM
N.C.R. (75%)	5689 KW @ 78.2RPM
MAX CRITICAL RANGE	42-50 RPM
AUX. BOILER	Miura, 1x HB-20000kg/h
GENERATOR (3 sets)	YANMAR 6EY22ALWS, 1180KWx900rpm
EMER D. G.	CUMMINS, 6CT8.3-D(M), 188KW
PROPELLER	4 Blade FPP, Dia 7100mm
RUDDER	Semi-Spade, 35°
STEERING GEAR	Rotary Vane, RV 1050-3
FW GENERATOR CAP	ALFA LAVAL, 15Ts/Day
BOW THRUSTER	N.A

BUNKER TANKS	
1 FOT (P)	317.90 m³
1 FOT (S)	292.80 m³
2 FOT	619.50 m³
2 FO (S)in	
2FO(S)out	
FO SETT	34.00 m³
FO SER	34.00 m³
LSFO sett	
LSFO Serv	
FO OFLOW	
TOTAL	1298.20 m³
MGO	449.30 m³
MOG Srv 1	18.20 m³
MOG Srv 2	18.20 m³
TOTAL	485.70 m³

WINCHES / WINDLASS / ROPES / EMERGENCY TOWING			
	FWD	AFT	PARTICULARS
WINCHES	6 (d.drm)	6 (d.drm)	
ROPE	6	6	200m
Winch BHC	6	6	55.0mt
WINDLASS	2	NIL	
FIRE WIRE	1	1	Owner supply
ANCHOR	2	0	Stbd 12 shackles / Port 11 shackles
			Anchor chain: 73 mm
EMG.TOWING	YES	YES	
	1	1	

CARGO AND BALLAST PUMPING SYSTEM				
MAIN PUMPS	NO.	CAPACITY	HEAD	RPM
CARGO Framo	14	600m³/hr	120mic	
CARGO Framo	2	300m³/hr	120mic	
BALLAST Framo	2	700m³/hr	35mic	
TANK CLNG Framo	1	160m³/hr	110mic	

MANIFOLD ARRANGEMENT	
Distance of cargo manifold to cargo manifold	2010 mm
Distance of cargo manifold to vpr. return manifold	4020 mm
Distance of top of rail to centre of manifold	895 mm
Distance of manifold to ship side	4600 mm
Distance of manifold from keel	20.4 m



PRINCIPAL PARTICULARS

CARGO HOSE CRANES		LIFE BOATS	FIRE FIGHTING SYSTEM	
1 Set x 10 Ts		1x 25 Persons	E/RM	CO2,HYPER MIST
IG / VAPOR EMISSION / VENTING		Type: FRP	PUMP ROOM	CO2
IG BLOWER CAPACITY	4500/cum/Hr.	TOTALLY ENCLOSED TYPE	CARGO/DK AREA	LOW EXPANSION FOAM
P/V VALVE PR./ VAC. SETTING	2200/-350mmwg	Min Bow Drft: 6.465m		
		Blst Drft: F 6.50m, A 8.28m		
		MARPOL Trim: 1.53m		
		Propeller Immer.: 7.10m		